



www.havayesh.com

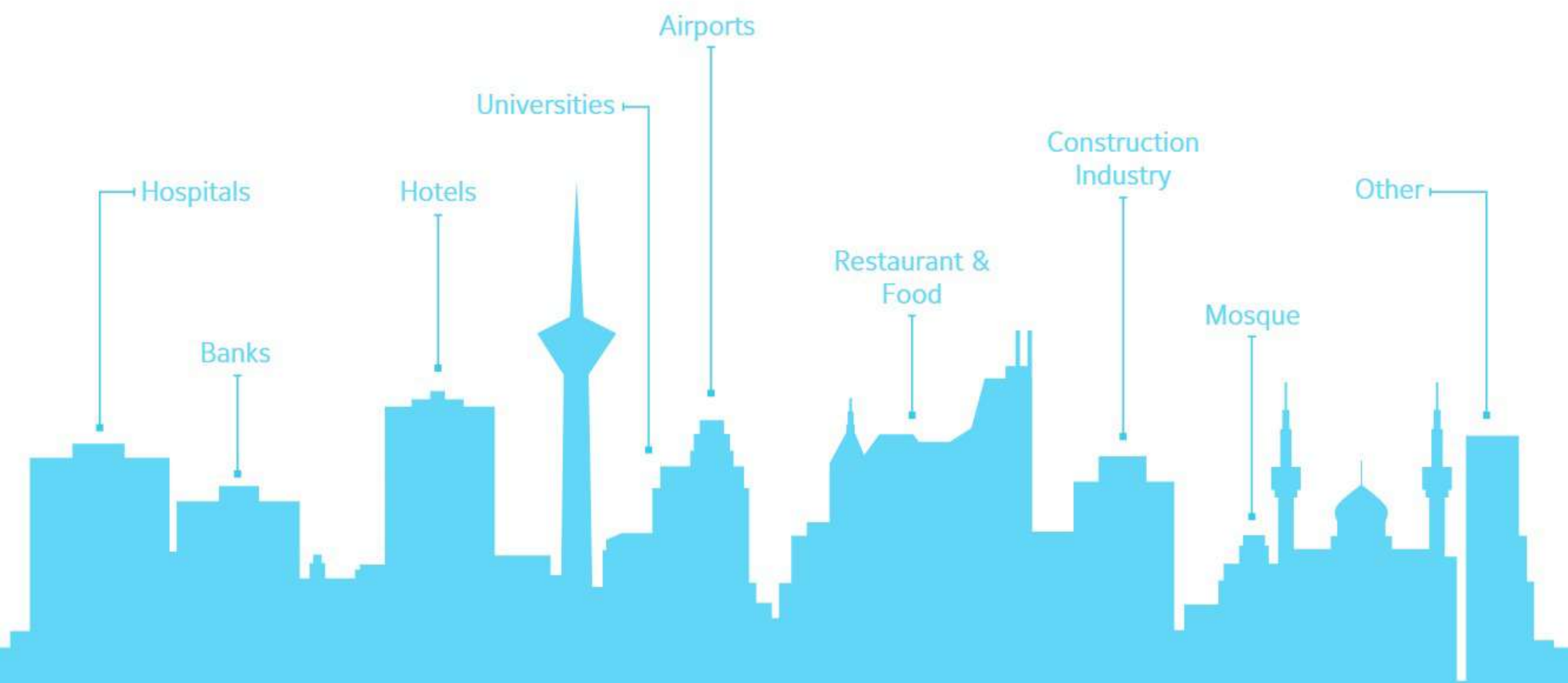
021-73092



CASSETTE
FAN COIL UNIT

Saran

Life's Pleasant Breeze



AIR CONDITIONING MFG.GROUP

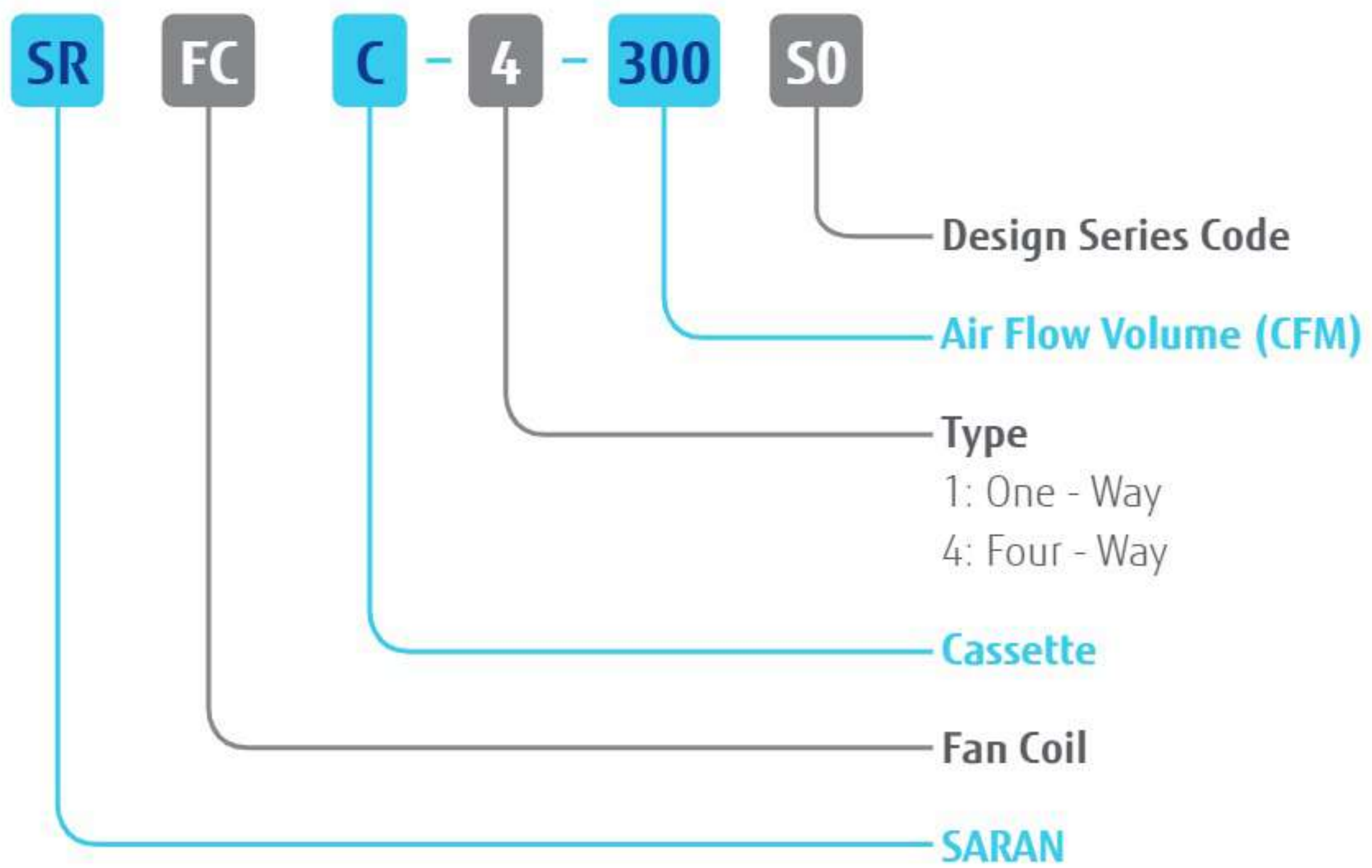


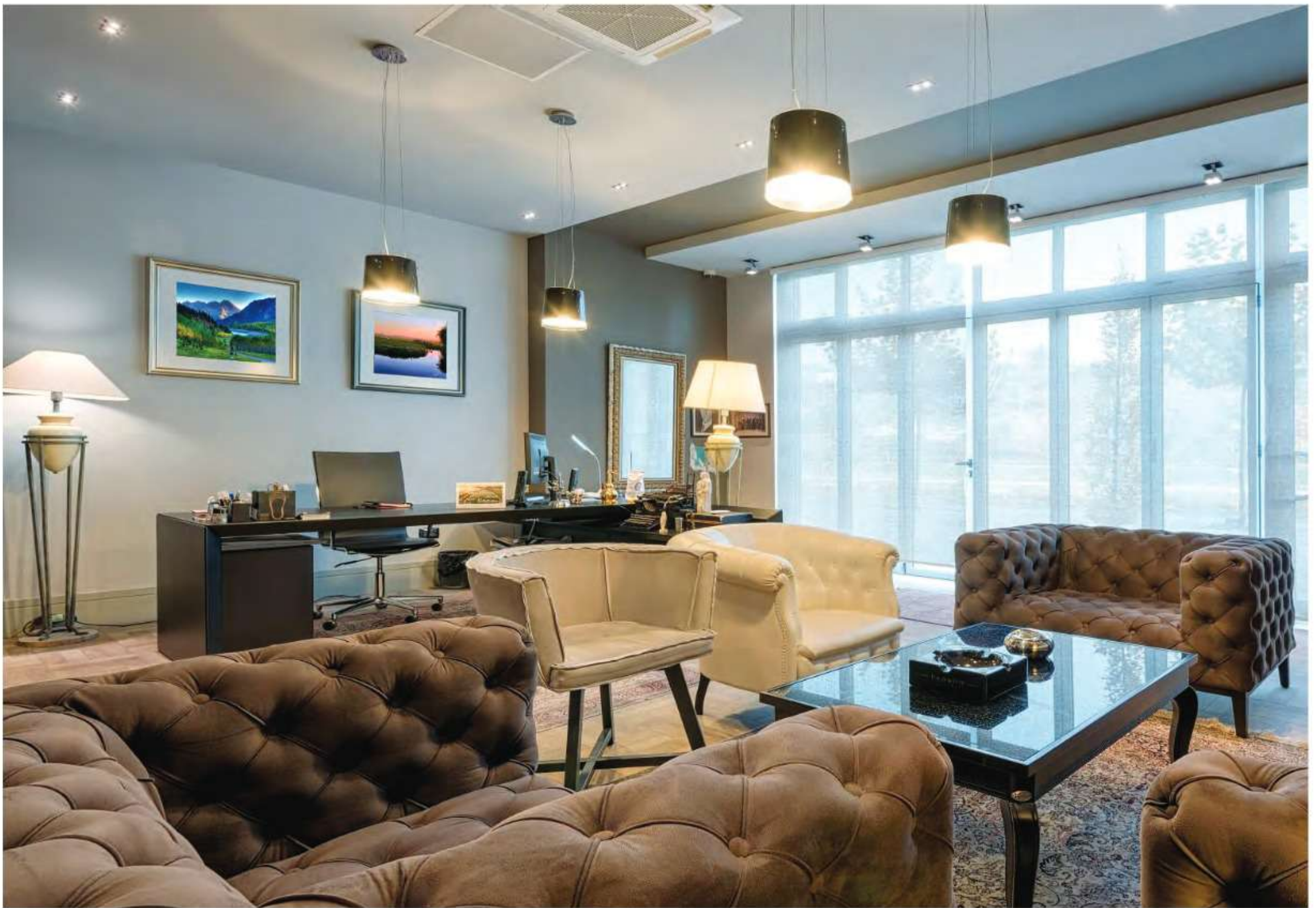
Contents

| | |
|--------------------------|----|
| Nomenclature | 4 |
| Introduction | 5 |
| Features | 5 |
| Technical Data | 6 |
| Selection Considerations | 7 |
| Select Example | 8 |
| Performance Data | 9 |
| Dimensions | 14 |



NOMENCLATURE





Introduction

Saran cassette fan coil units are perfectly convenient for small super market, restaurant, office, meeting room, villa, meeting room, living room and so on, and it can even be used as the updating product for modern residential A/C.

Because of cassette fan coil units are installed under the ceiling, compared with floor standing type A/C, it has following advantages:

Saving room space; ceiling installation combining with the decoration, makes the room more elegant, flexible installation in anywhere in the ceiling and 4-direction blowing, makes the indoor temperature is even and makes you feel more comfortable, so Cassette type A/C is a perfect replacing product of floor standing type A/C.

Features

- Concealed design, ceiling installation, room space saving, it is very suitable for family or office occasion;
- With Setting or Auto two operation modes, four-way (one-way) blowing, strong circulating wind, multi wind speed;
- One-step formed shell by mold, appearance is elegant;
- Special insulation design, achieves high heat insulation efficiency, and no condensation on shell;
- Built-in drain pump, High lift drain pump, creating the ideal solution for perfect water drainage, also construction and installation is much easier and convenient;
- Long term air filter, wash period is two times longer than normal filter, and maintenance is free;
- 3D helix air blade ensures the air flow sufficiently, reduces the unit thickness, and reduces the operation noise greatly;
- Plastic drip tray adopts innovative foam-PS combined with plastic technical, the thickness of plastic reaches 1mm, avoid any leakage;
- Ingenious hook design, the panel is convenient to install or remove;
- Fresh air intake design, leading in fresh air to improve indoor air quality anytime;
- Auto-restart function;
- Standard remote controller and optional wired controller;



Technical Data

Table 1: Technical Data (Four Way)

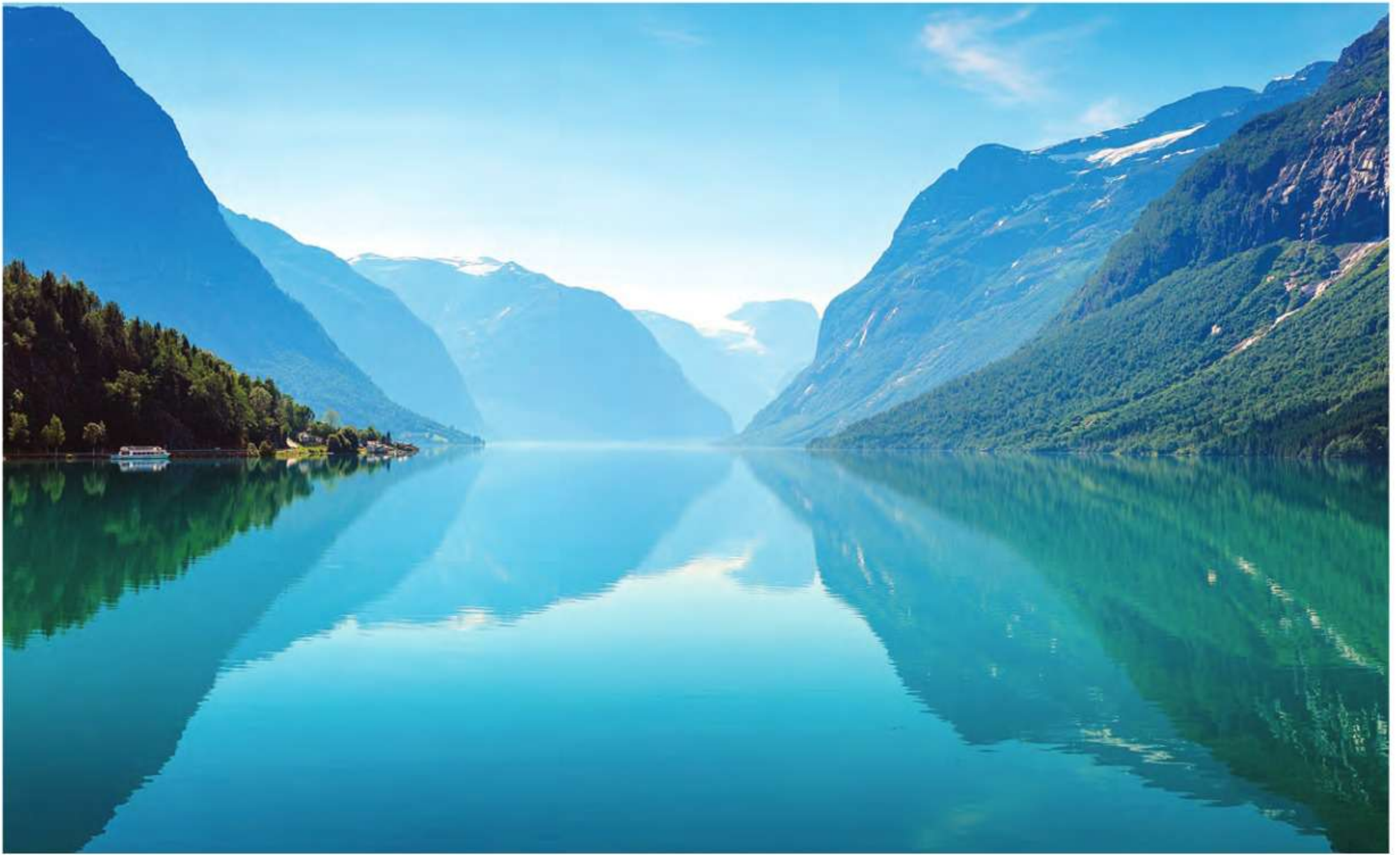
| Model | | SRFCC-4-300 | SRFCC-4-400 | SRFCC-4-500 | SRFCC-4-600 | SRFCC-4-800 | SRFCC-4-1000 | SRFCC-4-1200 |
|---------------------------------|------------------|-------------|-------------|-------------|--------------|-------------|--------------|--------------|
| Nominal Air Flow Rate (CFM) | | 300 | 400 | 500 | 600 | 800 | 1000 | 1200 |
| Total Heating Capacity (Btu/hr) | | 20700 | 30510 | 34050 | 38940 | 60990 | 76100 | 89540 |
| Total Cooling Capacity (Btu/hr) | | 8950 | 13220 | 14740 | 16840 | 26350 | 34610 | 40280 |
| Fan & Motor | Fan Quantity | 1 | | | | | | |
| | Motor Quantity | 1 | | | | | | |
| | Power Input (W) | 50 | 57 | 67 | 90 | 131 | 145 | 186 |
| Water Flow Rate (GPM) | | 2.6 | 3.3 | 4.0 | 4.6 | 6.6 | 7.9 | 9.2 |
| Water Pressure Drop (Ft.W.G) | | 4.0 | 6.7 | 12.4 | 13.0 | 12.0 | 15.7 | 16.1 |
| Inlet/Outlet Water Pipe | | | | | R3/4" (DN20) | | | |
| Drain Pipe | | | | | R3/4" (DN20) | | | |
| Noise (dBA) | | 39 | 40 | 42 | 44 | 45 | 48 | 50 |
| Weight (kg) | Net/Gross(Body) | 20/21.5 | 20/21.5 | 21/22.5 | 24.5/28 | 25.5/29 | 26.5/31 | 28/32.5 |
| | Net/Gross(Panel) | 3/5 | 3/5 | 3/5 | 5/7 | 5/7 | 5/7 | 5/7 |

Table 2: Technical Data (One Way)

| Model | | SRFCC-1-200 | SRFCC-1-300 | SRFCC-1-400 | SRFCC-1-500 |
|---------------------------------|------------------|-------------|-------------|-------------|--------------|
| Nominal Air Flow Rate (CFM) | | 200 | 300 | 400 | 500 |
| Total Heating Capacity (Btu/hr) | | 15020 | 21390 | 28470 | 35570 |
| Total Cooling Capacity (Btu/hr) | | 6770 | 9250 | 12340 | 15400 |
| Fan & Motor | Fan Quantity | 1 | | | |
| | Motor Quantity | 1 | | | |
| | Power Input (W) | 37 | 52 | 62 | 76 |
| Water Flow Rate (GPM) | | 2.0 | 2.6 | 3.3 | 4.0 |
| Water Pressure Drop (Ft.W.G) | | 4.9 | 4.0 | 6.7 | 12.4 |
| Inlet/Outlet Water Pipe | | | | | R3/4" (DN20) |
| Drain Pipe | | | | | R3/4" (DN20) |
| Noise (dBA) | | 37 | 39 | 41 | 43 |
| Weight (kg) | Net/Gross(Body) | 22/26 | 22/26 | 23/27 | 23/27 |
| | Net/Gross(Panel) | 4/6 | 4/6 | 4/6 | 4/6 |

NOTE

- Cooling capacities are based on entering chilled water temperature of 44°F and entering air temperature of 80°F DB / 67°F WB at fan high speed.
- Heating capacities are based on entering hot water temperature of 180°F and entering air temperature of 68°F DB at fan high speed.
- Parameters above may be modified as product improvement. We keep the right to change the product specifications without prior notice.



Selection Considerations

Following factors should be considered for selecting of Saran cassette fan coil units:

- Available space for the unit including floor to ceiling height
- Type of application (Standard / District cooling)
- Presence of high sensible or peripheral loads in space
- Functionality of intended space usage
- Availability of access for pipes, drains and power
- Compatibility with intended space finish
- Fresh air and ventilation requirements
- Noise level desired at peak or part load operations
- Control system desired especially if winter heating is required
- Economy of layout

Saran cassette fan coil units rating data presented in the "Performance Data" tables indicate capacity of the fan coil units at fan high speed on sea level altitude, So for other condition, following performance adjustment factors shall be attend in unit selection:

Table 3: Altitude Correction Factors

| Altitude (ft) | 0 | 1000 | 2000 | 3000 | 4000 | 5000 | 6000 |
|---------------------------|------|------|------|------|------|------|------|
| Total Cooling Capacity | 1.00 | 0.99 | 0.98 | 0.97 | 0.96 | 0.94 | 0.93 |
| Sensible Cooling Capacity | 1.00 | 0.96 | 0.93 | 0.90 | 0.86 | 0.83 | 0.80 |
| Total Heating Capacity | 1.00 | 0.97 | 0.94 | 0.90 | 0.87 | 0.83 | 0.81 |

Table 4: Fan Speed Correction Factors

| Altitude (ft) | High | Medium | Low |
|---------------------------|------|--------|------|
| Total Cooling Capacity | 1.00 | 0.85 | 0.65 |
| Sensible Cooling Capacity | 1.00 | 0.81 | 0.60 |
| Total Heating Capacity | 1.00 | 0.85 | 0.65 |



Selection Example

Given:

Required Air Flow Rate: 600 CFM
 Ambient Altitude: 2000 ft
 Fan Speed: High
 Cassette Type: Four-Way

Summer Conditions

Total Cooling Load: 16500 Btu/hr
 Sensible Cooling Load: 9800 Btu/hr
 Entering Air Temperature: 80.6°F DB / 67.1°F WB
 Entering Water Temperature: 44.5°F

Winter Conditions

Total Heating Load: 29000 Btu/hr
 Entering Air Temperature: 70°F DB
 Entering Water Temperature: 160°F

Step1: Appropriate Fan Coil Unit Selection

Because of we need 600 CFM air flow rate, in first step we select SR FCC-4-600. By referring to performance table, we can see total and sensible cooling capacity of this unit with 4.6 GPM chilled water flow rate in given summer conditions are 16840 Btu/hr and 10620 Btu/hr, respectively. In addition, heating capacity of this unit with 4.6 GPM hot water flow rate in given winter conditions are 31780 Btu/hr.

Step2: Comparison of Selected Model Performance with Our Requirements

In this step, we check selected model performance in our condition:

Because of fan coil units performance tables are based on sea level altitude and fan high speed, we should be using load adjustment factor in our conditions, so that by referring to tables 1 and 2, we have:

- Actual Total Cooling Capacity = $16840 \times 0.98 \times 1.00 = 16503$ Btu/hr
- Actual Sensible Cooling Capacity = $10620 \times 0.93 \times 1.00 = 9877$ Btu/h
- Actual Heating Capacity = $31780 \times 0.94 \times 1.00 = 29873$ Btu/hr

Therefore, the chosen unit satisfies the load requirements.

Step3: Determine water flow range

To determine water flow range, we can using following formula:

$$\text{Chilled water flow range (°F)} = \frac{\text{Actual Total Cooling Capacity (Btu/hr)}}{500 \times \text{Chilled Water Flow Rate (GPM)}} = \frac{16503}{500 \times 4.6} = 7.2 \text{ °F}$$

$$\text{Hot water flow range (°F)} = \frac{\text{Actual Heating Capacity (Btu/hr)}}{500 \times \text{Hot Water Flow Rate (GPM)}} = \frac{29873}{500 \times 4.6} = 13 \text{ °F}$$

Performance Data

Table 5a: Chilled Water Rating (One-Way Type)

| Air inlet temperature (°F) | | | 78.8 DB / 65.7 WB | | | | | | 80.6 DB / 66.2 WB | | | | | |
|------------------------------|-----------------------|------------------------------|-------------------|-------------------|----------------|-------------------|----------------|-------------------|-------------------|-------------------|----------------|-------------------|----------------|-------------------|
| Water inlet temperature (°F) | | | 41 | | 44.5 | | 48 | | 41 | | 44.5 | | 48 | |
| Model | Water Flow Rate (GPM) | Water Pressure Drop (Ft.W.G) | Total (Btu/hr) | Sensible (Btu/hr) | Total (Btu/hr) | Sensible (Btu/hr) | Total (Btu/hr) | Sensible (Btu/hr) | Total (Btu/hr) | Sensible (Btu/hr) | Total (Btu/hr) | Sensible (Btu/hr) | Total (Btu/hr) | Sensible (Btu/hr) |
| SRFCC-1-200 | 0.7 | 0.8 | 4790 | 3630 | 4230 | 3400 | 3630 | 2970 | 4880 | 3830 | 4460 | 3600 | 3750 | 3140 |
| | 1.1 | 1.8 | 5470 | 4090 | 4820 | 3780 | 4140 | 3300 | 5630 | 4310 | 4970 | 3980 | 4290 | 3510 |
| | 1.5 | 3.3 | 6520 | 4430 | 5750 | 4070 | 4970 | 3540 | 6670 | 4640 | 5910 | 4280 | 5120 | 3790 |
| | 2.0 | 4.9 | 7130 | 4520 | 6340 | 4140 | 5460 | 3590 | 7310 | 4750 | 6420 | 4370 | 5640 | 3820 |
| SRFCC-1-300 | 1.3 | 1.2 | 6500 | 4930 | 5750 | 4620 | 4930 | 4030 | 6640 | 5200 | 6050 | 4890 | 5100 | 4270 |
| | 1.8 | 2.0 | 7440 | 5550 | 6540 | 5140 | 5620 | 4490 | 7640 | 5860 | 6750 | 5410 | 5820 | 4760 |
| | 2.2 | 2.9 | 8780 | 5970 | 7750 | 5490 | 6690 | 4770 | 8990 | 6240 | 7960 | 5760 | 6890 | 5110 |
| | 2.6 | 4.0 | 9730 | 6170 | 8660 | 5660 | 7450 | 4900 | 9980 | 6480 | 8760 | 5970 | 7700 | 5210 |
| SRFCC-1-400 | 1.9 | 2.7 | 8690 | 6590 | 7690 | 6170 | 6590 | 5400 | 8880 | 6950 | 8100 | 6540 | 6820 | 5720 |
| | 2.4 | 3.8 | 9940 | 7420 | 8750 | 6870 | 7510 | 6000 | 10210 | 7830 | 9020 | 7240 | 7780 | 6370 |
| | 2.9 | 5.2 | 11730 | 7970 | 10360 | 7330 | 8930 | 6370 | 12010 | 8340 | 10630 | 7700 | 9210 | 6830 |
| | 3.3 | 6.7 | 12990 | 8240 | 11560 | 7550 | 9940 | 6540 | 13310 | 8660 | 11700 | 7970 | 10270 | 6950 |
| SRFCC-1-500 | 2.6 | 6.0 | 10860 | 8230 | 9600 | 7710 | 8230 | 6740 | 11090 | 8690 | 10120 | 8170 | 8520 | 7140 |
| | 3.1 | 8.0 | 12410 | 9270 | 10920 | 8580 | 9380 | 7490 | 12760 | 9780 | 11270 | 9040 | 9720 | 7950 |
| | 3.5 | 10.0 | 14650 | 9960 | 12940 | 9160 | 11160 | 7960 | 15000 | 10420 | 13280 | 9610 | 11500 | 8530 |
| | 4.0 | 12.4 | 16200 | 10280 | 14420 | 9420 | 12410 | 8160 | 16610 | 10800 | 14590 | 9940 | 12810 | 8670 |

Table 5b: Chilled Water Rating (One-Way Type)

| Air inlet temperature (°F) | | | 80.6 DB / 67.1 WB | | | | | | 82.4 DB / 71.6 WB | | | | | |
|------------------------------|-----------------------|------------------------------|-------------------|-------------------|----------------|-------------------|----------------|-------------------|-------------------|-------------------|----------------|-------------------|----------------|-------------------|
| Water inlet temperature (°F) | | | 41 | | 44.5 | | 48 | | 41 | | 44.5 | | 48 | |
| Model | Water Flow Rate (GPM) | Water Pressure Drop (Ft.W.G) | Total (Btu/hr) | Sensible (Btu/hr) | Total (Btu/hr) | Sensible (Btu/hr) | Total (Btu/hr) | Sensible (Btu/hr) | Total (Btu/hr) | Sensible (Btu/hr) | Total (Btu/hr) | Sensible (Btu/hr) | Total (Btu/hr) | Sensible (Btu/hr) |
| SRFCC-1-200 | 0.7 | 0.8 | 5060 | 3750 | 4480 | 3470 | 4130 | 3460 | 6350 | 4700 | 5740 | 4450 | 5190 | 3840 |
| | 1.1 | 1.8 | 5830 | 4210 | 5170 | 3880 | 4500 | 3680 | 7290 | 5270 | 6640 | 4980 | 5980 | 4320 |
| | 1.5 | 3.3 | 6980 | 4580 | 6160 | 4200 | 5380 | 3980 | 8640 | 5670 | 7920 | 5400 | 7130 | 4680 |
| | 2.0 | 4.9 | 7560 | 4700 | 6770 | 4270 | 5920 | 4010 | 9480 | 5900 | 8650 | 5450 | 7740 | 4810 |
| SRFCC-1-300 | 1.3 | 1.2 | 6880 | 5100 | 6090 | 4720 | 5610 | 4700 | 8620 | 6390 | 7800 | 6050 | 7050 | 5220 |
| | 1.8 | 2.0 | 7910 | 5720 | 7020 | 5280 | 6120 | 5000 | 9900 | 7160 | 9010 | 6770 | 8120 | 5870 |
| | 2.2 | 2.9 | 9400 | 6170 | 8300 | 5660 | 7240 | 5370 | 11630 | 7640 | 10670 | 7270 | 9600 | 6310 |
| | 2.6 | 4.0 | 10320 | 6420 | 9250 | 5830 | 8080 | 5470 | 12940 | 8050 | 11800 | 7440 | 10560 | 6570 |
| SRFCC-1-400 | 1.9 | 2.7 | 9200 | 6820 | 8140 | 6310 | 7500 | 6290 | 11530 | 8550 | 10430 | 8090 | 9430 | 6990 |
| | 2.4 | 3.8 | 10580 | 7650 | 9390 | 7050 | 8170 | 6680 | 13240 | 9570 | 12050 | 9050 | 10860 | 7850 |
| | 2.9 | 5.2 | 12560 | 8250 | 11090 | 7560 | 9670 | 7170 | 15540 | 10210 | 14250 | 9720 | 12830 | 8430 |
| | 3.3 | 6.7 | 13770 | 8560 | 12340 | 7780 | 10780 | 7300 | 17270 | 10740 | 15750 | 9930 | 14090 | 8760 |
| SRFCC-1-500 | 2.6 | 6.0 | 11490 | 8520 | 10170 | 7890 | 9370 | 7860 | 14400 | 10680 | 13030 | 10100 | 11770 | 8730 |
| | 3.1 | 8.0 | 13210 | 9550 | 11730 | 8810 | 10210 | 8350 | 16530 | 11950 | 15050 | 11300 | 13560 | 9800 |
| | 3.5 | 10.0 | 15680 | 10300 | 13850 | 9440 | 12080 | 8950 | 19410 | 12750 | 17800 | 12140 | 16030 | 10530 |
| | 4.0 | 12.4 | 17180 | 10690 | 15400 | 9710 | 13450 | 9110 | 21550 | 13400 | 19650 | 12390 | 17580 | 10930 |

NOTE

- Capacities are based on fan high speed and sea level altitude. For other condition, performance adjustment factors shall be attend in fan coil units selection (See Table 3&4).



Performance Data (Cont.)

Table 6a: Chilled Water Rating (Four-Way Type)

| Air inlet temperature (°F) | | | 78.8 DB / 65.7 WB | | | | | | 80.6 DB / 66.2 WB | | | | | |
|------------------------------|-----------------------|------------------------------|-------------------|-------------------|----------------|-------------------|----------------|-------------------|-------------------|-------------------|----------------|-------------------|----------------|-------------------|
| Water inlet temperature (°F) | | | 41 | | 44.5 | | 48 | | 41 | | 44.5 | | 48 | |
| Model | Water Flow Rate (GPM) | Water Pressure Drop (FL.W.G) | Total (Btu/hr) | Sensible (Btu/hr) | Total (Btu/hr) | Sensible (Btu/hr) | Total (Btu/hr) | Sensible (Btu/hr) | Total (Btu/hr) | Sensible (Btu/hr) | Total (Btu/hr) | Sensible (Btu/hr) | Total (Btu/hr) | Sensible (Btu/hr) |
| SRFCC-4-300 | 1.3 | 1.2 | 6640 | 5030 | 5870 | 4720 | 5030 | 4120 | 6780 | 5310 | 6190 | 5000 | 5210 | 4370 |
| | 1.8 | 2.0 | 7580 | 5660 | 6670 | 5240 | 5730 | 4570 | 7790 | 5970 | 6880 | 5520 | 5940 | 4850 |
| | 2.2 | 2.9 | 8920 | 6060 | 7880 | 5580 | 6800 | 4840 | 9130 | 6340 | 8090 | 5850 | 7010 | 5190 |
| | 2.6 | 4.0 | 9420 | 5980 | 8380 | 5470 | 7210 | 4740 | 9650 | 6280 | 8480 | 5770 | 7450 | 5040 |
| SRFCC-4-400 | 1.9 | 2.7 | 8840 | 6700 | 7820 | 6280 | 6700 | 5490 | 9020 | 7070 | 8230 | 6650 | 6930 | 5810 |
| | 2.4 | 3.8 | 10080 | 7530 | 8870 | 6970 | 7620 | 6090 | 10360 | 7940 | 9150 | 7340 | 7900 | 6460 |
| | 2.9 | 5.2 | 11880 | 8070 | 10480 | 7420 | 9050 | 6450 | 12160 | 8440 | 10760 | 7790 | 9320 | 6910 |
| | 3.3 | 6.7 | 13910 | 8830 | 12380 | 8080 | 10650 | 7000 | 14250 | 9270 | 12530 | 8530 | 11000 | 7440 |
| SRFCC-4-500 | 2.6 | 6.0 | 11010 | 8340 | 9730 | 7820 | 8340 | 6830 | 11240 | 8800 | 10250 | 8280 | 8630 | 7240 |
| | 3.1 | 8.0 | 12550 | 9370 | 11050 | 8670 | 9480 | 7570 | 12900 | 9890 | 11390 | 9140 | 9830 | 8040 |
| | 3.5 | 10.0 | 14080 | 9570 | 12420 | 8790 | 10720 | 7640 | 14400 | 10010 | 12760 | 9230 | 11050 | 8190 |
| | 4.0 | 12.4 | 15510 | 9850 | 13810 | 9020 | 11880 | 7810 | 15900 | 10340 | 13970 | 9510 | 12260 | 8300 |
| SRFCC-4-600 | 3.3 | 7.2 | 13170 | 9980 | 11640 | 9350 | 9980 | 8170 | 13440 | 10530 | 12260 | 9910 | 10320 | 8660 |
| | 3.7 | 9.0 | 14660 | 10940 | 12910 | 10130 | 11080 | 8850 | 15070 | 11550 | 13310 | 10670 | 11490 | 9390 |
| | 4.2 | 10.9 | 16260 | 11050 | 14360 | 10160 | 12390 | 8830 | 16640 | 11560 | 14740 | 10670 | 12770 | 9460 |
| | 4.6 | 13.0 | 17720 | 11240 | 15770 | 10300 | 13570 | 8920 | 18160 | 11810 | 15960 | 10870 | 14010 | 9480 |
| SRFCC-4-800 | 4.0 | 5.0 | 20130 | 15250 | 17800 | 14300 | 15250 | 12500 | 20550 | 16100 | 18750 | 15150 | 15780 | 13240 |
| | 4.8 | 7.0 | 22150 | 16530 | 19490 | 15310 | 16730 | 13370 | 22760 | 17450 | 20110 | 16120 | 17350 | 14180 |
| | 5.7 | 9.4 | 26110 | 17740 | 23050 | 16310 | 19890 | 14180 | 26720 | 18560 | 23660 | 17130 | 20500 | 15200 |
| | 6.6 | 12.0 | 27730 | 17600 | 24680 | 16120 | 21240 | 13960 | 28420 | 18480 | 24970 | 17010 | 21930 | 14850 |
| SRFCC-4-1000 | 5.3 | 7.7 | 24240 | 18370 | 21440 | 17230 | 18370 | 15060 | 24750 | 19390 | 22590 | 18250 | 19010 | 15950 |
| | 6.2 | 10.0 | 27680 | 20660 | 24360 | 19130 | 20910 | 16700 | 28440 | 21810 | 25120 | 20150 | 21680 | 17730 |
| | 7.0 | 12.7 | 32630 | 22180 | 28810 | 20400 | 24860 | 17720 | 33400 | 23200 | 29570 | 21420 | 25620 | 18990 |
| | 7.9 | 15.7 | 36420 | 23110 | 32410 | 21180 | 27890 | 18330 | 37320 | 24280 | 32800 | 22340 | 28800 | 19500 |
| SRFCC-4-1200 | 6.6 | 9.7 | 29770 | 22560 | 26330 | 21150 | 22560 | 18490 | 30400 | 23820 | 27730 | 22410 | 23350 | 19590 |
| | 7.5 | 12.0 | 33880 | 25290 | 29820 | 23420 | 25610 | 20450 | 34820 | 26700 | 30760 | 24670 | 26540 | 21700 |
| | 8.4 | 14.1 | 40730 | 27680 | 35950 | 25450 | 31020 | 22110 | 41680 | 28950 | 36910 | 26720 | 31980 | 23700 |
| | 9.2 | 16.1 | 42380 | 26900 | 37720 | 24650 | 32460 | 21340 | 43430 | 28250 | 38170 | 26000 | 33510 | 22690 |

NOTE

- Capacities are based on fan high speed and sea level altitude. For other condition, performance adjustment factors shall be attend in fan coil units selection (See Table 3&4).



Performance Data (Cont.)

Table 6b: Chilled Water Rating (Four-Way Type)

| Air inlet temperature (°F) | | | 80.6 DB / 67.1 WB | | | | | | 82.4 DB / 71.6 WB | | | | | |
|------------------------------|-----------------------|--------------------------------|-------------------|-------------------|----------------|-------------------|----------------|-------------------|-------------------|-------------------|----------------|-------------------|----------------|-------------------|
| Water inlet temperature (°F) | | | 41 | | 44.5 | | 48 | | 41 | | 44.5 | | 48 | |
| Model | Water Flow Rate (GPM) | Water Pressure Drop (Ft. W.G.) | Total (Btu/hr) | Sensible (Btu/hr) | Total (Btu/hr) | Sensible (Btu/hr) | Total (Btu/hr) | Sensible (Btu/hr) | Total (Btu/hr) | Sensible (Btu/hr) | Total (Btu/hr) | Sensible (Btu/hr) | Total (Btu/hr) | Sensible (Btu/hr) |
| SRFCC-4-300 | 1.3 | 1.2 | 7030 | 5210 | 6230 | 4830 | 5730 | 4810 | 8820 | 6530 | 7980 | 6180 | 7200 | 5340 |
| | 1.8 | 2.0 | 8070 | 5830 | 7160 | 5380 | 6230 | 5100 | 10090 | 7300 | 9190 | 6900 | 8280 | 5980 |
| | 2.2 | 2.9 | 9550 | 6270 | 8440 | 5750 | 7360 | 5450 | 11820 | 7760 | 10840 | 7390 | 9760 | 6410 |
| | 2.6 | 4.0 | 9990 | 6210 | 8950 | 5640 | 7820 | 5290 | 12530 | 7790 | 11430 | 7200 | 10220 | 6350 |
| SRFCC-4-400 | 1.9 | 2.7 | 9350 | 6930 | 8280 | 6420 | 7620 | 6400 | 11720 | 8690 | 10610 | 8220 | 9580 | 7100 |
| | 2.4 | 3.8 | 10730 | 7760 | 9520 | 7150 | 8290 | 6780 | 13430 | 9710 | 12220 | 9180 | 11010 | 7960 |
| | 2.9 | 5.2 | 12710 | 8350 | 11230 | 7650 | 9790 | 7260 | 15730 | 10330 | 14430 | 9840 | 12990 | 8530 |
| | 3.3 | 6.7 | 14750 | 9170 | 13220 | 8330 | 11550 | 7820 | 18490 | 11500 | 16870 | 10630 | 15090 | 9380 |
| SRFCC-4-500 | 2.6 | 6.0 | 11640 | 8630 | 10310 | 7990 | 9490 | 7960 | 14600 | 10820 | 13210 | 10240 | 11930 | 8840 |
| | 3.1 | 8.0 | 13360 | 9660 | 11860 | 8900 | 10320 | 8440 | 16710 | 12080 | 15210 | 11430 | 13710 | 9910 |
| | 3.5 | 10.0 | 15070 | 9900 | 13310 | 9070 | 11600 | 8600 | 18640 | 12240 | 17100 | 11660 | 15400 | 10630 |
| | 4.0 | 12.4 | 16450 | 10230 | 14740 | 9290 | 12880 | 8720 | 20630 | 12830 | 18810 | 11860 | 16830 | 10470 |
| SRFCC-4-600 | 3.3 | 7.2 | 13930 | 10320 | 12330 | 9560 | 11360 | 9520 | 17460 | 12940 | 15800 | 12250 | 14270 | 10580 |
| | 3.7 | 9.0 | 15610 | 11280 | 13850 | 10410 | 12060 | 9860 | 19530 | 14120 | 17770 | 13350 | 16010 | 11860 |
| | 4.2 | 10.9 | 17410 | 11430 | 15370 | 10480 | 13410 | 9940 | 21540 | 14150 | 19760 | 13470 | 17790 | 12720 |
| | 4.6 | 13.0 | 18780 | 11680 | 16840 | 10620 | 14710 | 9960 | 23560 | 14650 | 21490 | 13550 | 19230 | 11960 |
| SRFCC-4-800 | 4.0 | 5.0 | 21290 | 15780 | 18860 | 14620 | 17360 | 14560 | 26700 | 19790 | 24160 | 18730 | 21820 | 15590 |
| | 4.8 | 7.0 | 23580 | 17040 | 20920 | 15710 | 18220 | 14890 | 29500 | 21320 | 26840 | 20160 | 24190 | 17480 |
| | 5.7 | 9.4 | 27950 | 18350 | 24680 | 16830 | 21520 | 15950 | 34580 | 22710 | 31720 | 21620 | 28560 | 18760 |
| | 6.6 | 12.0 | 29400 | 18290 | 26350 | 16610 | 23020 | 15590 | 36880 | 22940 | 33630 | 21200 | 30090 | 18720 |
| SRFCC-4-1000 | 5.3 | 7.7 | 25650 | 19010 | 22710 | 17610 | 20910 | 17540 | 32160 | 23830 | 29090 | 22560 | 26280 | 19480 |
| | 6.2 | 10.0 | 29460 | 21300 | 26140 | 19640 | 22760 | 18610 | 36860 | 26650 | 33540 | 25200 | 30230 | 21850 |
| | 7.0 | 12.7 | 34930 | 22940 | 30850 | 21030 | 26900 | 19940 | 43220 | 28390 | 39650 | 27030 | 35690 | 23450 |
| | 7.9 | 15.7 | 38610 | 24020 | 34610 | 21820 | 30240 | 20470 | 48430 | 30130 | 44170 | 27850 | 39520 | 24580 |
| SRFCC-4-1200 | 6.6 | 9.7 | 31490 | 23350 | 27890 | 21620 | 25680 | 21550 | 39490 | 29270 | 35730 | 27700 | 32280 | 23340 |
| | 7.5 | 12.0 | 36070 | 26070 | 32010 | 24040 | 27870 | 22790 | 45120 | 32620 | 41060 | 30850 | 37000 | 26180 |
| | 8.4 | 14.1 | 43590 | 28640 | 38500 | 26250 | 33580 | 24890 | 53930 | 35430 | 49480 | 33730 | 44550 | 29260 |
| | 9.2 | 16.1 | 44940 | 27950 | 40280 | 25400 | 35190 | 23820 | 56360 | 35060 | 51400 | 32410 | 45990 | 26910 |

NOTE

- Capacities are based on fan high speed and sea level altitude. For other condition, performance adjustment factors shall be attend in fan coil units selection (See Table 3&4).



Performance Data (Cont.)

Table 7: Hot Water Rating (One-Way Type)

| Air inlet temperature (°F) | | | Heating Capacity (Btu/hr) | | | | | | | | |
|------------------------------|-----------------------|------------------------------|---------------------------|-------|-------|-------|-------|-------|-------|-------|-------|
| | | | 68 | | | 70 | | | 72 | | |
| Water inlet temperature (°F) | | | 140 | 160 | 180 | 140 | 160 | 180 | 140 | 160 | 180 |
| Model | Water Flow Rate (GPM) | Water Pressure Drop (Ft.W.G) | | | | | | | | | |
| SRFCC-1-200 | 0.7 | 0.8 | 8140 | 10190 | 12210 | 7940 | 9990 | 11980 | 7740 | 9760 | 11780 |
| | 1.1 | 1.8 | 8750 | 10930 | 13130 | 8550 | 10730 | 12930 | 8300 | 10500 | 12670 |
| | 1.5 | 3.3 | 9520 | 11860 | 14250 | 9240 | 11630 | 13970 | 9010 | 11380 | 13770 |
| | 2.0 | 4.9 | 10000 | 12510 | 15020 | 9750 | 12250 | 14760 | 9490 | 12000 | 14530 |
| SRFCC-1-300 | 1.3 | 1.2 | 11680 | 14620 | 17520 | 11390 | 14330 | 17190 | 11100 | 14000 | 16900 |
| | 1.8 | 2.0 | 12550 | 15680 | 18840 | 12260 | 15390 | 18550 | 11900 | 15060 | 18180 |
| | 2.2 | 2.9 | 13570 | 16920 | 20330 | 13180 | 16590 | 19930 | 12850 | 16230 | 19640 |
| | 2.6 | 4.0 | 14250 | 17820 | 21390 | 13880 | 17450 | 21030 | 13520 | 17090 | 20700 |
| SRFCC-1-400 | 1.9 | 2.7 | 15560 | 19480 | 23350 | 15180 | 19100 | 22920 | 14790 | 18660 | 22530 |
| | 2.4 | 3.8 | 16730 | 20890 | 25100 | 16350 | 20500 | 24710 | 15860 | 20070 | 24230 |
| | 2.9 | 5.2 | 17740 | 22100 | 26560 | 17220 | 21670 | 26040 | 16790 | 21200 | 25660 |
| | 3.3 | 6.7 | 18970 | 23720 | 28470 | 18480 | 23240 | 27990 | 18000 | 22750 | 27550 |
| SRFCC-1-500 | 2.6 | 6.0 | 19460 | 24350 | 29190 | 18970 | 23870 | 28640 | 18490 | 23320 | 28160 |
| | 3.1 | 8.0 | 20910 | 26110 | 31370 | 20430 | 25630 | 30880 | 19820 | 25080 | 30280 |
| | 3.5 | 10.0 | 22610 | 28170 | 33850 | 21940 | 27630 | 33190 | 21400 | 27020 | 32700 |
| | 4.0 | 12.4 | 23690 | 29630 | 35570 | 23080 | 29020 | 34960 | 22480 | 28420 | 34420 |

NOTE

- Capacities are based on fan high speed and sea level altitude. For other condition, performance adjustment factors shall be attend in fan coil units selection (See Table 3&4).



Performance Data (Cont.)

Table 8: Hot Water Rating (Four-Way Type)

| Air inlet temperature (°F) | | | Heating Capacity (Btu/hr) | | | | | | | | |
|------------------------------|-----------------------|------------------------------|---------------------------|-------|-------|-------|-------|-------|-------|-------|-------|
| | | | 68 | | | 70 | | | 72 | | |
| Water inlet temperature (°F) | | | 140 | 160 | 180 | 140 | 160 | 180 | 140 | 160 | 180 |
| Model | Water Flow Rate (GPM) | Water Pressure Drop (Ft.W.G) | | | | | | | | | |
| SRFCC-4-300 | 1.3 | 1.2 | 11820 | 14790 | 17730 | 11520 | 14500 | 17400 | 11230 | 14170 | 17110 |
| | 1.8 | 2.0 | 12350 | 15410 | 18520 | 12060 | 15130 | 18240 | 11700 | 14810 | 17880 |
| | 2.2 | 2.9 | 13010 | 16220 | 19490 | 12630 | 15900 | 19100 | 12320 | 15550 | 18830 |
| | 2.6 | 4.0 | 13790 | 17250 | 20700 | 13430 | 16890 | 20350 | 13080 | 16540 | 20030 |
| SRFCC-4-400 | 1.9 | 2.7 | 15700 | 19660 | 23560 | 15310 | 19270 | 23120 | 14930 | 18830 | 22730 |
| | 2.4 | 3.8 | 16870 | 21070 | 25310 | 16480 | 20680 | 24920 | 15990 | 20240 | 24430 |
| | 2.9 | 5.2 | 18620 | 23200 | 27880 | 18070 | 22750 | 27330 | 17620 | 22250 | 26930 |
| | 3.3 | 6.7 | 20320 | 25420 | 30510 | 19800 | 24900 | 29990 | 19280 | 24380 | 29520 |
| SRFCC-4-500 | 2.6 | 6.0 | 19600 | 24530 | 29400 | 19110 | 24040 | 28850 | 18620 | 23490 | 28360 |
| | 3.1 | 8.0 | 20350 | 25410 | 30530 | 19880 | 24940 | 30060 | 19290 | 24410 | 29470 |
| | 3.5 | 10.0 | 21690 | 27030 | 32480 | 21050 | 26510 | 31850 | 20530 | 25930 | 31380 |
| | 4.0 | 12.4 | 22680 | 28370 | 34050 | 22100 | 27790 | 33470 | 21520 | 27210 | 32950 |
| SRFCC-4-600 | 3.3 | 7.2 | 23780 | 29760 | 35670 | 23190 | 29170 | 35010 | 22600 | 28510 | 34420 |
| | 3.7 | 9.0 | 24880 | 31060 | 37320 | 24300 | 30490 | 36740 | 23580 | 29840 | 36030 |
| | 4.2 | 10.9 | 25510 | 31780 | 38190 | 24760 | 31170 | 37440 | 24140 | 30480 | 36900 |
| | 4.6 | 13.0 | 25940 | 32440 | 38940 | 25270 | 31780 | 38280 | 24610 | 31110 | 37680 |
| SRFCC-4-800 | 4.0 | 5.0 | 32790 | 41040 | 49190 | 31980 | 40230 | 48270 | 31160 | 39310 | 47460 |
| | 4.8 | 7.0 | 35230 | 43990 | 52850 | 34420 | 43170 | 52030 | 33400 | 42260 | 51010 |
| | 5.7 | 9.4 | 38070 | 47440 | 57010 | 36950 | 46520 | 55890 | 36040 | 45510 | 55080 |
| | 6.6 | 12.0 | 40630 | 50810 | 60990 | 39590 | 49770 | 59960 | 38550 | 48730 | 59020 |
| SRFCC-4-1000 | 5.3 | 7.7 | 40940 | 51240 | 61420 | 39930 | 50230 | 60270 | 38910 | 49080 | 59250 |
| | 6.2 | 10.0 | 44020 | 54970 | 66040 | 43010 | 53950 | 65020 | 41730 | 52810 | 63750 |
| | 7.0 | 12.7 | 47580 | 59290 | 71250 | 46180 | 58140 | 69850 | 45040 | 56870 | 68830 |
| | 7.9 | 15.7 | 50690 | 63390 | 76100 | 49390 | 62100 | 74800 | 48090 | 60800 | 73640 |
| SRFCC-4-1200 | 6.6 | 9.7 | 49130 | 61490 | 73700 | 47910 | 60270 | 72330 | 46690 | 58900 | 71100 |
| | 7.5 | 12.0 | 52750 | 65860 | 79130 | 51530 | 64640 | 77910 | 50000 | 63270 | 76380 |
| | 8.4 | 14.1 | 59470 | 74090 | 89040 | 57720 | 72660 | 87290 | 56290 | 71070 | 86020 |
| | 9.2 | 16.1 | 59640 | 74590 | 89540 | 58120 | 73060 | 88010 | 56590 | 71540 | 86640 |

NOTE

- Capacities are based on fan high speed and sea level altitude. For other condition, performance adjustment factors shall be attend in fan coil units selection (See Table 3&4).

Dimensions

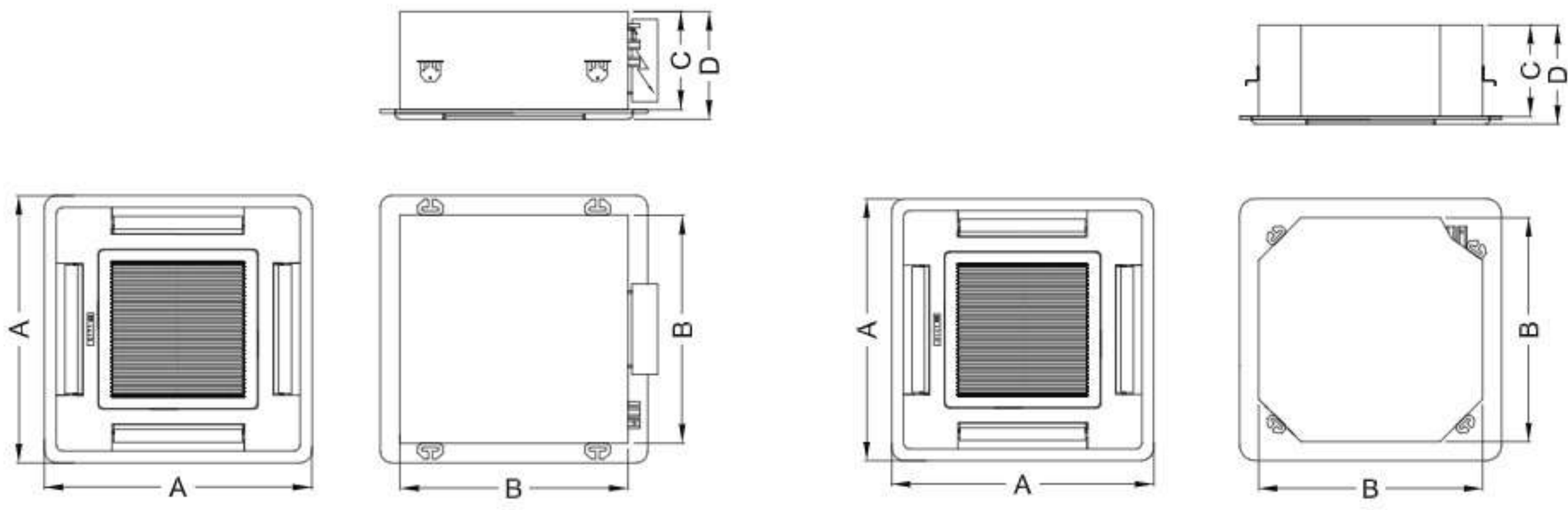


Table 9: Four Way Type Dimensions

| Model | A | B | C | D |
|--------------|-----|-----|-----|-----|
| SRFCC-4-300 | 650 | 593 | 284 | 319 |
| SRFCC-4-400 | 650 | 593 | 284 | 319 |
| SRFCC-4-500 | 650 | 593 | 284 | 319 |
| SRFCC-4-600 | 950 | 835 | 250 | 277 |
| SRFCC-4-800 | 950 | 835 | 250 | 277 |
| SRFCC-4-1000 | 950 | 835 | 290 | 317 |
| SRFCC-4-1200 | 950 | 835 | 290 | 317 |

NOTE

- All dimensions are in mm.
- The above data is subject to change without prior notice.

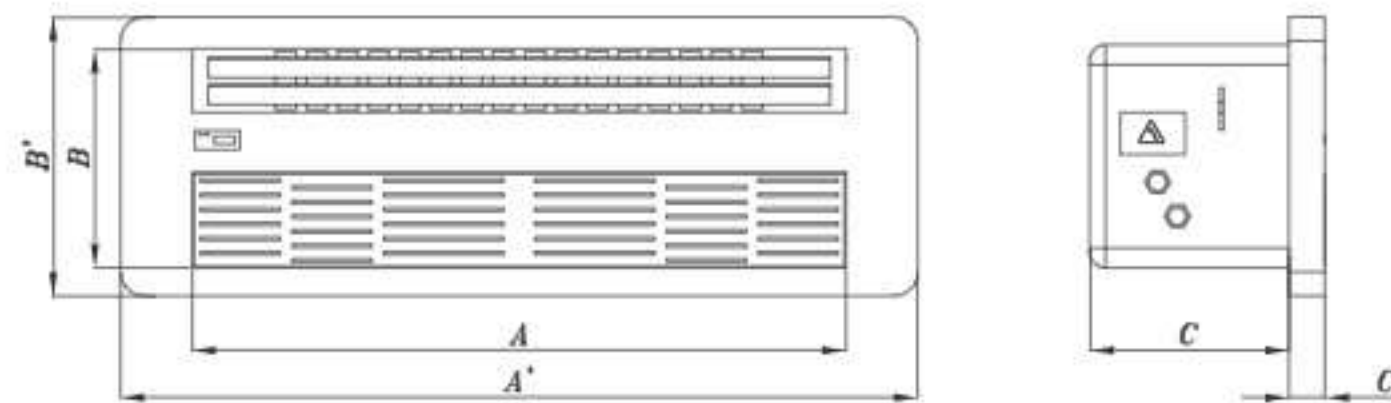
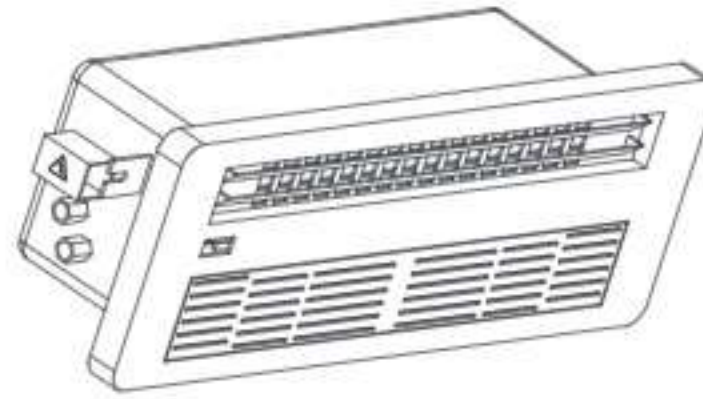


Table 10: One Way Type Dimensions

| Model | Unit | | | Panel | | |
|-------------|------|-----|-----|-------|-----|----|
| | A | B | C | A' | B' | C' |
| SRFCC-1-200 | 850 | 400 | 235 | 1040 | 470 | 18 |
| SRFCC-1-300 | 850 | 400 | 235 | 1040 | 470 | 18 |
| SRFCC-1-400 | 850 | 400 | 235 | 1040 | 470 | 18 |
| SRFCC-1-500 | 850 | 400 | 235 | 1040 | 470 | 18 |

NOTE

- All dimensions are in mm.
- The above data is subject to change without prior notice.